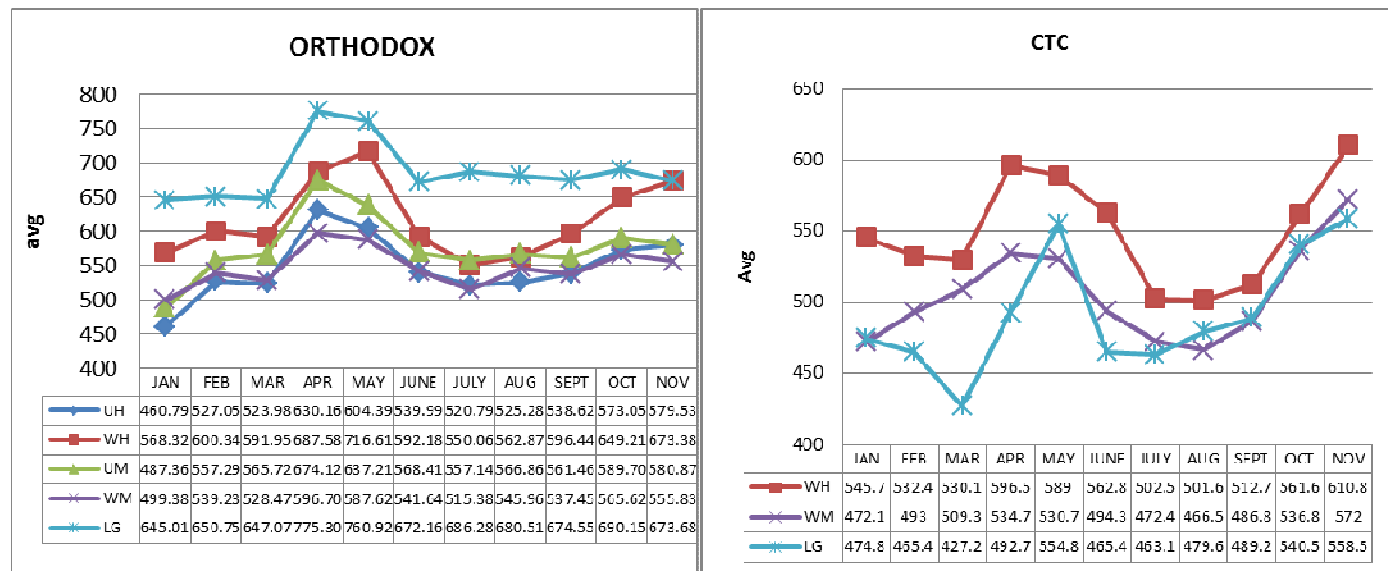


SALE NO.47 OF 01ST/02ND DECEMBER, 2020

COMMENTS

Monthly Colombo Tea Auction Averages Jan to Nov, 2020



Colombo Tea Auction prices for all orthodox elevational categories performed exceptionally well in the April to June period as can be seen from the above chart, but started sliding from then on till almost the end of the third quarter, following which a steady increase is seen up to the end of October. Western High Grown teas continued to gain further in November while other elevations saw declines. In the case of CTC teas the month of November has been the best for all elevations so far this year. During the Jan-Nov period this year the combined Orthodox and CTC average of Rs. 630.48 is indicative of a sharp gain of Rs. 87.05 per kg from the comparative average of 2019, which signifies the upbeat momentum of Colombo Tea Auction prices in the current year.

This week's auction (Sale # 47) was conducted on December 01 & 02 (Tue/Wed) and, the quantity 5.6 m/kgs was marginally higher than the previous sale. The Low Grown Leafy/ Semi Leafy/ Tippy & Small Leaf/ Premium Flowery catalogues totaled 2.66 m/kgs, whilst Main Sale High & Medium category amounted to 0.67 m/kgs. The Ex Estate catalogue had 0.68 m/kgs.

Ex Estate teas saw good general demand at easier rates. A selection of the finest High Grown Western BOP's sold around last rates whilst their corresponding BOPF's eased Rs. 20/- and more following quality. Below-best BOP's were generally firm while their BOPF's were Rs. 10/- easier. Nuwara Eliya's continued to attract premium levels. Uda Pussellawa BOP's were firm while their BOPF's were firm to easier. With the exception of a limited few teas, all other Uva BOP's were Rs. 20/- to 30/- lower, and BOPF marginally lower to last. High Grown CTC PF1's were Rs. 20/- to 30/- easier, whilst the best CTC Mediums eased up to 20/- and others ranged from firm to irregularly dearer. Low Grown PF1's were generally firm where quality was maintained. There was maintained strong competition from China and Taiwan, whilst Hong Kong, Japan and the "Tea Bag" sector operating for Russia was also active. Selective demand was seen from Europe and North America. A large multinational buyer was again forceful across both Rotorvane and CTC teas.

Low grown teas met with fair demand. Best available OP1's were again easier whilst below-best sorts maintained previous prices. Well-made OP/OPA's were firm to selectively dearer whilst poorer varieties were maintained. A small selection of stylish BOPI's were irregularly dearer. The better Pek1's too were fully firm to dearer while cleaner Pekoe's held firm; and bolder types a little easier. Best FBOP's appreciated on last but secondary teas were irregularly lower. Neater FBOPF1's were marginally lower. Below-best FBOPF1's ruled firm. There was more widespread demand from the Middle Eastern buyers whilst Turkey, C.I.S. and Russia continued active.

This week's auction comprised of **10,516** lots with a total quantity of **5,584,416** kgs. The catalogue-wise breakdown was as follows:-

| | <u>Lot</u> | <u>Qty. (Kgs)</u> |
|----------------------|----------------------|-------------------------|
| Low Grown Leafy | 2,130 | 906,994 |
| Low Grown Semi Leafy | 1,703 | 833,985 |
| Low Grown Tippy | 1,666 | 860,606 |
| High & Medium | 1,416 | 675,787 |
| Off Grade/BOP1A | 2,186 | 1,130,511 |
| Dust | 460 | 432,200 |
| Premium Flowery | 346 | 58,625 |
| Ex-Estate | <u>609</u> | <u>685,708</u> |
| Total | <u>10,516</u> | <u>5,584,416</u> |

In Lighter Vein

The wise old Sculptor

Many years ago, a smart old sculptor was finally allowed to leave the Soviet Union and immigrate to the United States where his son lived. When he was searched at the Moscow airport, the customs official found a bust of Lenin.

Customs: "What is that?"

Old man: "What is that? What is that?! Do not say what is that?" Say Who is that?" That is Lenin! The genius who thought up this worker's paradise!"

The official smiled and let the old man through.

The old man arrived at JFK airport, where an American customs official found the bust of Lenin.

Customs: "What is that?"

Old man:" What is that? What is that?! Do not say what is that?" Say who is that?" That is Lenin! The bastard! I'll put him on display in my toilet for all the years he prevented an old man from having a good life."

The official smiled and let him through.

When he arrived at his family's house in Brooklyn, his grandson saw him unpack the bust.

Grandson: "Who is that, grandpa?"

Old man: "Who is that? Who is that? Don't say who is that. Say "What is that?" That, my child, is eight pounds of gold!

LOW GROWNS - LEAFY

- BOP1** : Select best invoices advanced Rs.50-100 per kg; balance was firm to irregularly dearer. Teas at the lower end were barely steady.
- OPI** : Teas in the select best category were irregularly dearer; balance declined Rs.30-40/- per kg. Stalky invoices were generally firm.
- OP** : Best teas were easier by Rs.20-30/- per kg ; balance was maintained. Teas at the lower end were maintained.
- OPA** : Select best teas declined by Rs,20/- per kg; balance however appreciated by Rs,10-20/- per kg. Poorer sorts maintained.
- PEK/PEK1**: Well-made shotty invoices were maintained; balance declined by Rs.20-30/- per kg. Best bold PEK's were lower by Rs.20/- per kg; balance too declined Rs.20-30/- per kg. Teas at the lower end tended irregular.

Quotations (Rs./Kg)

| | Best | | Below Best | | Others | |
|-----------------|------------------|------------------|------------------|------------------|------------------|------------------|
| | <u>This Week</u> | <u>Last Week</u> | <u>This Week</u> | <u>Last Week</u> | <u>This Week</u> | <u>Last Week</u> |
| BOP1 | 870-1100 | 840-1000 | 650-700 | 630-680 | 500-530 | 500-525 |
| OPI | 870-1100 | 850-1100 | 650-680 | 650-680 | 320-350 | 300-320 |
| OP | 680-710 | 670-700 | 570-600 | 550-580 | 340-380 | 320-350 |
| OPA | 680-720 | 670-700 | 570-600 | 550-580 | 330-370 | 320-350 |
| PEK/PEK1 | 750-800 | 750-820 | 630-680 | 630-670 | 520-550 | 500-530 |

TIPPY/SMALL LEAF

- BOP/BOPSP** : In general easier.
- BOPF/BOPFSP** : Select best and best together with cleaner below best were firm. Others were irregular following quality.
- FBOP/FBOP1** : Select best FBOP's in general firm. Best and cleaner below best irregular following quality. Cleaner teas at the bottom end too were firm to selectively dearer. Others sold around last levels. FBOP1's in general firm.
- FBOPF/FBOPF1**: Select best FF1's in general firm. Best together with below best sold around last levels. However, Cleaner teas at the lower end were firm. Others irregular following quality. Very tippy teas Sold around last levels. Well-made teas in the best category maintained. All others were lower.
- FBOPFSP/EXSP** : Except for few Invoices in the top category which sold well others declined and below best varieties held firm. Teas at the lower end sold at last week levels.

Quotations (Rs./Kg)

| | Best | | Below Best | | Others | |
|---------------------|------------------|------------------|------------------|------------------|------------------|------------------|
| | <u>This Week</u> | <u>Last Week</u> | <u>This Week</u> | <u>Last Week</u> | <u>This Week</u> | <u>Last Week</u> |
| BOP/BOPSP | 800-980 | 800-940 | 650-750 | 650-750 | 500-550 | 500-550 |
| BOPF /BOPFSP | 750-870 | 750-810 | 600-700 | 600-650 | 450-500 | 450-500 |
| FBOP/FBOP1 | 950-1100 | 900-1180 | 700-780 | 700-800 | 650-680 | 650-700 |
| FBOPF/FBOPF1 | 900-1100 | 900-1040 | 650-750 | 650-750 | 580-620 | 550-580 |
| FBOPFSP/EXSP | 1500-3000 | 1500-2650 | 900-1000 | 800-1000 | 650-700 | 600-650 |

(Cont'd...3)

(Cont'd...4)

MEDIUM GROWN LEAFY/SEMI LEAFY TEAS

FBOP : Well-made select FBOP's sold well. Secondary and poorer sorts tended irregular.

FBOPF/FBOPF1 : Well-made teas on offer appreciated Rs.10-20/- per kg and more. Below best types too were firm on last levels. Teas at the bottom end tended irregular.

PEK/PEK1 : Except for the well-made PEK/PEK1 others tended irregularly lower.

| <u>Quotations (Rs./Kg)</u> | Best | | Below Best | | Others | |
|----------------------------|------------------|------------------|-------------------|------------------|------------------|------------------|
| | <u>This Week</u> | <u>Last Week</u> | <u>This Week</u> | <u>Last Week</u> | <u>This Week</u> | <u>Last Week</u> |
| FBOP | 730-980 | 720-850 | 640-730 | 640-720 | 530-640 | 530-640 |
| FBOPF/FBOPF1 | 730-870 | 720-790 | 560-740 | 550-720 | 500-560 | 500-550 |
| PEK/PEK1 | 830-940 | 820-940 | 700-830 | 730-820 | 540-700 | 560-730 |

HIGH GROWN

BOP: Few select invoices sold around last week's levels following special inquiry, whilst the others declined Rs. 20 per kg and more following quality. Teas in the Below Best and Plainer categories were generally firm. Nuwara Eliya's continued to sell well at firm to dearer rates. Uda Pussellawa's sold around last week's levels. Uva's -Select clean leaf coloury invoices were firm, whilst the others declined Rs. 20-30 per kg.

BOPF: Best Westerns declined Rs. 20 per kg and more following quality. Teas in the Below Best category were firm and Rs. 10 per kg lower, whilst at the lower end prices were generally maintained. Nuwara Eliya's were irregular following quality. Uva/Uda Pussellawa's were firm and tended marginally easier.

| <u>Quotations (Rs./Kg)</u> | BOP | | BOPF | |
|----------------------------|------------------|------------------|------------------|------------------|
| | <u>This Week</u> | <u>Last Week</u> | <u>This Week</u> | <u>Last Week</u> |
| Best Westerns | 710-770 | 740-810 | 710-750 | 720-790 |
| Below Best Westerns | 690-700 | 700-720 | 680-700 | 690-710 |
| Plainer Westerns | 660-680 | 640-690 | 650-670 | 650-680 |
| Nuwara Eliyas | 960 | 620-940 | 940-960 | 620-1020 |
| Brighter Uda Pussellawas | 680-700 | 650-680 | 670-700 | 640-680 |
| Other Uda Pussellawas | 650 | 630-640 | 640-660 | 630 |
| Best Uva's. | 670-700 | 680-740 | 680-710 | 670-700 |
| Other Uva's | 650-660 | 630-650 | 660-670 | 630-650 |

MEDIUM GROWN TEAS

BOP: Continued to sell around last week's levels.

BOPF: Generally firm.

| <u>Quotations (Rs./Kg)</u> | BOP | | BOPF | |
|----------------------------|------------------|------------------|------------------|------------------|
| | <u>This Week</u> | <u>Last Week</u> | <u>This Week</u> | <u>Last Week</u> |
| Best Westerns | 600-760 | 610-790 | 580-690 | 570-680 |

CTC

PF1: High Grown – Select high priced invoices declined Rs.20-30/- per kg whilst the others were firm and Rs.10-20/- per kg dearer. Medium Grown PF1's – Better sorts up to Rs.20/- per kg lower whilst the others appreciated by a similar margin and more. Low Grown PF1's were generally firm though tend to fluctuate following quality.

BP1: High grown BP1's continued to sell around last week's levels though prices were irregular following quality. Medium Grown BP1's better sorts were firm and tended dearer whilst the others were easier. Low Grown BP1's Rs.10-20/- per kg lower.

| <u>Quotations (Rs./Kg)</u> | PF1 | | BP1 | |
|----------------------------|------------------|------------------|------------------|------------------|
| | <u>This Week</u> | <u>Last Week</u> | <u>This Week</u> | <u>Last Week</u> |
| High | 590-660 | 560-730 | 590-730 | 560-620 |
| Medium | 470-670 | 450-670 | 400-700 | 400-610 |
| Low | 360-800 | 350-850 | 350-640 | 420-690 |

OFF GRADES

Liquoring FNGS/advanced Rs.20/- per kg. Clean Low Grown FNGS/FNGS1s firm whilst others firm on last. Best BP's lost by Rs.20-30/- per kg. Well-made BMs dearer by Rs.10/- per kg whilst others followed a similar trend. Select best BOP1A's lower by Rs.20/- per kg. Best BOP1A's a little irregular whilst at the lower end, the poor sorts firm Rs.20-30/- per kg dearer.

| QUOTATIONS (Rs/kg) | HIGH | | MEDIUM | | LOW | |
|---------------------------|------------------|------------------|------------------|------------------|------------------|------------------|
| | <u>This Week</u> | <u>Last Week</u> | <u>This Week</u> | <u>Last Week</u> | <u>This Week</u> | <u>Last Week</u> |
| Good Fannings (Orthodox) | 420-610 | 420-590 | 380-430 | 380-430 | 340-440 | 340-430 |
| Good Fannings (CTC) | 350-500 | 350-500 | 380-500 | 380-500 | 320-430 | 320-430 |
| Other Fannings (Orthodox) | 330-380 | 330-370 | 300-370 | 300-370 | 300-370 | 300-370 |
| Other Fannings (CTC) | N/A | N/A | N/A | N/A | N/A | N/A |
| Good BM's | 380-430 | 380-430 | 410-460 | 410-460 | 410-490 | 410-490 |
| Other BM's | 340-370 | 340-370 | 340-380 | 340-380 | 340-380 | 340-380 |
| Best BOP1As | 450-520 | 450-500 | 470-580 | 470-600 | 490-660 | 490-680 |
| Other BOP1As | 340-400 | 340-400 | 340-390 | 340-390 | 340-400 | 340-400 |

DUST

Select best liquoring High Grown D1's dearer by Rs.10-20/- per kg whilst the secondary and below best types maintained on last week levels. Poor varieties too held firm. Low Grown Clean Dust met with fair demand. PD's from High & Medium elevations met with good demand whilst Low Grown PD's easier by Rs.20-40/- per kg.

| QUOTATIONS (Rs/kg) | HIGH | | MEDIUM | | LOW | |
|-------------------------------|------------------|------------------|------------------|------------------|------------------|------------------|
| | <u>This Week</u> | <u>Last Week</u> | <u>This Week</u> | <u>Last Week</u> | <u>This Week</u> | <u>Last Week</u> |
| Good Primary Dust 1(Orthodox) | 700-880 | 740-860 | 660-720 | 660-720 | 650-770 | 650-760 |
| Good Primary PD (CTC) | 650-730 | 680-800 | 650-720 | 680-770 | 600-710 | 650-770 |
| Secondary Dust | 400-450 | 360-480 | 400-450 | 440-470 | 400-480 | 440-500 |

World Crop Statistics (MKGS)

| Country | Month | 2019 | 2020 | Difference +/- | To-date 2019 | To-date 2020 | Difference +/- |
|--------------------|-------------|--------------|--------------|----------------|---------------|---------------|----------------|
| SRI LANKA | Sep. | 21.92 | 21.91 | -0.01 | 232.93 | 201.13 | -31.80 |
| BANGLADESH | Aug. | 13.51 | 11.32 | -2.19 | 52.56 | 45.30 | -7.3 |
| KENYA | Aug. | 37.20 | 38.52 | 1.32 | 281.26 | 375.75 | 94.5 |
| SOUTH INDIA | Aug. | 14.8 | 16.8 | 2.0 | 137.0 | 135.5 | -1.50 |
| NORTH INDIA | Aug. | 157.5 | 142.9 | -14.6 | 684.4 | 533.5 | -150.9 |
| MALAWI | July | 1.35 | 1.07 | -0.3 | 36.00 | 32.30 | -3.7 |
| UGANDA | June | 4.92 | 4.58 | -0.3 | 33.50 | 28.28 | -5.22 |

| | | | | | | | | |
|------------------------------|-----------------|------------------|------------------------------|-----------------|--------------|--------------------------------------|-------------------|---------------|
| <u>WESTERN MEDIUM</u> | | | <u>UVA MEDIUM</u> | | | <u>LOW GROWN LEAFY GRADES</u> | | |
| *Harangalla | BOP | 770/- | Hindagala | BOP | 700/- | N/ Panilkanda | BOP1 | 2050/- |
| Doomagastalawa | BOPSP | 760/- | Halpewatte Uva | BOPSP | 700/- | Pothotuwa | BOP1 | 1950/- |
| Vallai Oya | BOPF/BOPFSP | 680/- | St James | BOPF/BOPFSP | 630/- | *Sithaka | BOP1 | 1850/- |
| Craighead | BOP1 | 1120/- | Ury | BOP1 | 900/- | N/ Vithanakande | OP1 | 2950/- |
| Craighead | FBOP /FBOP1 | 980/- | Aruna Pressara | FBOP/FBOP1 | 820/- | Magedara | OP | 840/- |
| Doombagastalawa | FBOPF/FBOPF1 | 870/- | Dickwella | FBOPF/FBOPF1 | 760/- | Liyonta | OPA | 830/- |
| Windsorforest | OP/OPA | 730/- | Telbedde | FBOPF/FBOPF1 | 760/- | ACU Super | OPA | 830/- |
| Windsorforest | OP1 | 920/- | Uva Samovar | OP/OPA | 700/- | Lions | OPA | 820/- |
| Nayapane | PEK/PEK1 | 940/- | Glen Aipin | OP/OPA | 700/- | *Makandura | OPA | 810/- |
| *Harangalla | PEK/PEK1 | 920/- | Telbedde | OP1 | 860/- | Liyonta | PEKOE | 1200/- |
| <u>WESTERN HIGH</u> | | | <u>UVA HIGH</u> | | | <u>LOW GROWN TIPPY GRADES</u> | | |
| Alton | BOP | 770/- | Nayabedde | BOP | 700/- | *Sithaka | BOP | 980/- |
| Glentilt | BOPSP | 770/- | Uva Highlands | BOPSP | 680/- | Kelani | BOP | 980/- |
| Norwood | BOPF/BOPFSP | 750/- | Nayapane | BOPF/BOPFSP | 710/- | *Ihalapanapitiya | BOPSP | 890/- |
| Moray | BOPF/BOPFSP | 750/- | Ranaya | BOP1 | 740/- | *Andaradeniya Sup | BOPSP | 850/- |
| Strathspey | BOPF/BOPFSP | 750/- | Oodoowerra | BOP1 | 740/- | *Hidellana | BOPF | 860/- |
| Torrington | BOP1 | 700/- | Glenanore | FBOP/FBOP1 | 770/- | *Sithaka | FBOP | 1100/- |
| Inverness | BOP1 | 700/- | Springvalley | FBOPF/FBOPF1 | 750/- | Gunawardena | FBOP | 1100/- |
| Torrington | FBOP /FBOP1 | 800/- | Glenanore | OP/OPA | 700/- | Golden Garden | FBOP | 1100/- |
| Inverness | FBOPF/FBOPF1 | 780/- | Glenanore | OP1 | 780/- | Sithaka | FBOP1 | 920/- |
| Torrington | OP/OPA | 720/- | Ampitiyakande | PEK/ PEK1 | 860/- | Ceyenta | FBOPF | 1020/- |
| Weddemulla | OP1 | 800/- | <u>UDA PUSSELLAWA</u> | | | Sirimewanne | FBOPF1 | 1100/- |
| Weddemulla | PEK /PEK1 | 860/- | Mooloya | BOP | 700/- | *Ihalapanapitiya | FBOPF1 | 920/- |
| <u>NUWARA ELIYA</u> | | | LuckyLand | BOPSP | 700/- | <u>PREMIUM FLOWERY</u> | | |
| Mahagastotte | BOP | 960/- | Kirklees | BOPF/BOPFSP | 700/- | Winwood Garden | FBOPFSP | 3000/- |
| Lovers Leap | BOP | 960/- | Gordon | FBOP/ FBOP1 | 760/- | Yalta | FBOPFEXSP | 2900/- |
| Lovers Leap | BOPF | 960/- | Gordon | FBOPF/FBOPF1 | 670/- | *Sithaka | FBOPFEXSP1 | 2400/- |
| Court Lodge | FBOP/FBOP1 | 850/- | Delmar | OP/OPA | 620/- | <u>DUST</u> | | |
| Kenmeare | OP/OPA | 660/- | Delmar | OP1 | 720/- | <u>HIGH GROWN</u> | | |
| Mahagastotte | PEK/PEK1 | 740/- | *Delmar | PEK/PEK1 | 750/- | Mattakelle | DUST1 | 880/- |
| <u>CTC TEAS</u> | | | <u>OFF GRADES</u> | | | Dunsinance | PD | 730/- |
| <u>HIGH GROWN</u> | | | Mahagasthota | FNGS | 730/- | <u>MEDIUM GROWN</u> | | |
| Dunsinane CTC | PF1 | 660/- | Hingalgoda CTC | PF | 730/- | Delta | DUST1 | 720/- |
| Dunsinane CTC | BP1 | +++ 730/- | *Ihalapanapitiya | BM | 690/- | *Rothschild | PD | 720/- |
| <u>MEDIUM GROWN</u> | | | Sapumalkanda | BP | 670/- | <u>LOW GROWN</u> | | |
| *Rothschild CTC | PF1 | 650/- | Aldora | BOP1A | 750/- | *Sithaka | DUST1 | 770/- |
| Carolina CTC | PF1 | 650/- | *Garden Leaf | BO1A | 720/- | Ceciliyan | PD | 720/- |
| New Peacock | PF1 | 650/- | | | | | | |
| *Carolina CTC | BP1 | +++ 700/- | | | | | | |
| Ringwood | BPS | 380/- | | | | | | |
| <u>LOW GROWN</u> | | | | | | | | |
| Hingalgoda CTC | PF1 | 800/- | | | | | | |
| Ceetee Hills | PF1 | 800/- | | | | | | |
| Suduwelipothahena | BP1 | 640/- | | | | | | |
| Ceciliyan | BP1 | 640/- | | | | | | |
| Ranwin | BPS | 360/- | | | | | | |
| Canora | BPS | 360/- | | | | | | |

MONTHLY AVERAGES – November 2020

| Elevation | Orthodox | | CTC | | Orth. & CTC Combined | |
|-----------------------|---------------|---------------|---------------|---------------|----------------------|---------------|
| | Month | To-date | Month | To-date | Month | To-date |
| Uva High | 579.53 | 550.80 | - | - | 579.53 | 550.80 |
| Western High | 673.38 | 609.16 | 61076 | 545.05 | 666.57 | 601.64 |
| Uva Medium | 580.59 | 581.39 | - | - | 580.59 | 581.39 |
| Western Medium | 555.83 | 544.18 | 571.99 | 503.80 | 560.07 | 533.23 |
| Low Grown | 673.72 | 683.66 | 558.52 | 483.16 | 665.29 | 668.15 |
| TOTAL | 651.03 | 644.44 | 569.78 | 500.15 | 643.72 | 630.48 |

COLOMBO AUCTION - GROSS SALE AVERAGES

SALE NO.46 OF 24TH/25TH NOVEMBER, 2020.

| | 2020 | | | 2019 | |
|---------------------------------------|---------------|---------------|---------------|---------------|---------------|
| | Weekly | Month to Date | Year to Date | Weekly | Year to Date |
| Uva High Grown | 581.59 | 578.39 | 547.23 | 498.54 | 459.57 |
| Western High Grown | 684.52 | 663.86 | 596.69 | 578.61 | 520.18 |
| High Grown | 649.41 | 634.14 | 581.15 | 557.41 | 503.25 |
| Uva Medium | 578.41 | 582.65 | 582.93 | 536.29 | 490.73 |
| Western Medium | 576.75 | 563.72 | 533.84 | 476.50 | 452.97 |
| Medium Grown | 577.24 | 569.88 | 549.19 | 494.25 | 463.27 |
| Low Grown (Orthodox) | 676.35 | 673.17 | 683.62 | 620.73 | 584.30 |
| Combined L.G. (Orthodox + CTC) | 665.95 | 664.77 | 668.89 | 605.20 | 573.52 |
| Total | 648.41 | 643.29 | 630.35 | 580.14 | 541.99 |

DETAILS OF TEAS AWAITING SALES

Sale of 08th/09th Dec'2020

Sale of 15th/16th Dec'2020

| | Lots | Qty. (Kgs) | Lots | Qty. (Kgs) |
|----------------------|----------------------|-------------------------|----------------------|-------------------------|
| Low Grown Leafy | 2,184 | 949,250 | 2,256 | 964,850 |
| Low Grown Semi Leafy | 1,676 | 807,337 | 1,726 | 848,049 |
| Low Grown Tippy | 1,711 | 870,261 | 1,765 | 909,372 |
| High & Medium | 1,285 | 610,277 | 1,674 | 828,551 |
| Off Grade/BOP1A | 1,911 | 989,785 | 2,122 | 1,130,759 |
| Dust | 384 | 342,568 | 614 | 628,052 |
| Premium Flowery | 351 | 61,316 | 380 | 65,220 |
| Ex-Estate | <u>555</u> | <u>626,994</u> | <u>858</u> | <u>976,552</u> |
| Total | <u>10,057</u> | <u>5,258,148</u> | <u>11,395</u> | <u>6,351,405</u> |

Private Sale Figures (23/11/2020 - 28/11/2020) - 113,019.00 Kgs
 Cumulative - 4,299,606.35 Kgs

CATALOGUES

Sale No.49 of 15th/16th December, 2020

The Main Sale & Ex-Estate Sale closed on 26th November, 2020 at 04.30 p.m.

Sale No.50 of 21st/22nd December, 2020

The Main Sale & Ex-Estate Sale catalogues are scheduled to be closed on 03rd December, 2020 at 04.30 p.m. but sale may close before the scheduled date when the number of lots if reached.

Sale No.01 of 05th/06th January, 2021

The Main Sale & Ex-Estate Sale catalogues are scheduled to be closed on 10th December, 2020 at 04.30 p.m. but sale may close before the scheduled date when the number of lots if reached.

SALE NO.48

BROKER'S SELLING ORDER

Auction of 08th/09th December, 2020

Leafy/Tippy/BOPIA/ Premium Flowery

- 1 Forbes & Walker (Pvt) Ltd
2. Bartleet Produce Marketing (Pvt) Ltd
3. Mercantile Produce Brokers (Pvt) Ltd
- 4. Lanka Commodity Brokers Ltd**
5. Eastern Brokers Ltd
6. John Keells PLC
7. Asia Siyaka Commodities PLC
8. Ceylon Tea Brokers PLC

High & Medium/Off Grades/Dust

1. Forbes & Walker Tea Brokers (Pvt) Ltd
2. Bartleet Produce Marketing (Pvt) Ltd
- 3. Lanka Commodity Brokers Ltd**
4. Ceylon Tea Brokers PLC
5. Eastern Brokers Ltd
6. John Keells PLC
7. Asia Siyaka Commodities PLC
8. Mercantile Produce Brokers (Pvt) Ltd

Ex-Estate

1. Asia Siyaka Commodities PLC
2. John Keells PLC
3. Mercantile Produce Brokers (Pvt) Ltd
4. Ceylon Tea Brokers PLC
- 5. Lanka Commodity Brokers Ltd**
6. Bartleet Produce Marketing (Pvt) Ltd
7. Eastern Brokers Ltd
8. Forbes & Walker Tea Brokers (Pvt) Ltd

Crop & Weather

For the period 23rd to 29th November 2020

Western/Nuwara Eliya Regions - Both regions reported clear mornings and occasional evening showers, whilst certain sub-districts in the Western and Nuwara Eliya regions experienced bright weather throughout the week. The Department of Meteorology expects showers in the Western Region in the week ahead.

Uva/Udapussellawa Regions - The Uva/Udapussellawa regions reported bright mornings and evening showers. The Department of Meteorology forecasts heavy showers in the week ahead.

Low Grown - The Low Grown Region reported bright mornings and overcast evenings with occasional showers during the week. Heavy showers are expected in the Ruhuna Region in the week ahead according to the Department of Meteorology.

Crop Intake - The Western, Udapussellawa and Low Grown regions maintained, whilst the Nuwara Eliya Region reported a slight increase in the crop intake. The Uva Region reported a slight decrease in the crop intake.

OTHER MARKETS

BANGLADESH AUCTION- SALE NO.27 HELD ON MONDAY 30TH NOVEMBER, 2020

CTC LEAF: 46,072 packages of Current Season teas on offer once again met with a fairly good demand.

BROKENS: Well made good liquoring BOPs were little less in demand and eased by Tk.1/- to Tk.2/-. Their GBOPs were a good market and pries were fully firm following good competition. Their Mediums followed a similar trend and sold at firm to slightly dearer rates. Plainer sorts met with less demand and were an easier market with fair withdrawals. BLFs met with a little more demand at around last levels with less withdrawals.

FANNINGS: Well made good liquoring Fannings were a good market and were firm to slightly easier whilst their Mediums were about steady on last. Plainer sorts met with less demand and were an easier market with fair withdrawals. BLFs met with a little more demand at around last levels with less withdrawals.

CTC DUST: 8,905 packages of Current Season teas on offer met with quite a strong demand. Good liquoring varieties met with a good competition and advanced by Tk.5/- to Tk.7/- following quality. Medium varieties witnessed more demand compared to last. and were dearer by Tk.1/- to Tk.2/-. Plain and BLF teas met with only a fair demand at easier rates with quite fair withdrawals Blenders lent strong support with fair interest from the Loose tea buyers.

COMMENTS: Market witnessed a fairly good demand with select well made good liquoring varieties gaining in value following competition. Blenders were the mainstay of the market although Loose tea buyers were a little more active for the plainer varieties.

Dusts were a dearer market.

Our catalogue (Sale 27): Avg: Tk 199.50, Sold 78.7% & (Sale 26) Avg: Tk 194.73, sold 81.7%.

Quotations – This Week – (In Taka)

| Brokens | This Week | Last Week | Fannings | This week | Last Week | Dust | This Week | Last Week |
|---------------|-----------|-----------|---------------|-----------|-----------|------------|-----------|-----------|
| Large | 170-175N | 170-175N | Best | 195-203 | 198-203 | PD | 191-262 | 170-180 |
| Medium | 170-180 | 172-180 | Good | 188-194 | 188-195 | RD | 155-263 | 158-242 |
| Small | 180-205 | 182-205 | Medium | 175-180 | 175-180 | D | 185-299 | 185-278 |
| Plain | 150-165 | 150-165 | Plain | 150-165 | 150-165 | CD | 160-336 | 155-328 |
| BLF | 140-155 | 140-155 | BLF | 140-155 | 140-155 | BLF | 155-193 | 158-189 |

COURTESY: NATIONAL BROKERS LTD

Contd.....(10)

SOUTH INDIAN ROUND-UP FOR THE WEEK ENDING 28TH NOVEMBER, 2020.

KOCHI

CTC LEAF:

Demand: Fair demand. Brokens and fannings initially sold at easier levels by Rs.5 to 7 and sometimes more. Less demand from Internal and Upcountry buyers. Export buyers lent fair support.

LEAF-ORTHODOX:

Demand: Good demand.

Market: Well made high grown whole leaf was sold at barely steady levels and brokens sold at irregular to easier levels. Medium whole leaf, brokens and fannings witnessed restricted enquiry and eased in value with some withdrawal's.

Buying Pattern: CIS/Middle East exporters were active. Upcountry buyers lent support on whole leaf grades.

DUST

Demand: Better general demand.

Market: Best liquoring popular and better mediums sold at fully firm levels .Bolder grades tended barely steady to easier and it witnessed restricted demand. Plainer sorts were selling at fully firm levels.

Buying Pattern: Major blender AVT was active and KSCSC were active. Best mediums fetched with fair support from regional packeters. Domestic buyers were active in their purchases. Exporters were selective.

COONOOR

CTC LEAF

Demand: Sluggish

Market: Generally easier by Rs. 10/- to Rs. 15/- with only the Bolder Brokens and Fannings being sold. The sale had suffered heavy withdrawals.

The overall sale percentage is 24% at an average of Rs. 124.56.

Buying Pattern: Only fair participation from the Internal buyers with Major Blenders being selective. Export has shown an improvement in participation.

ORTH LEAF

Demand: Good

Market: Generally lower market with the Whole leaf grades and Brokens selling at Rs. 5/- to Rs. 8/- and Fannings at Rs. 5/- lower. However some odd lots were selling at dearer levels.

Buying Pattern: Fairly good Export operation was witnessed with fairly good Internal support.

CTC DUST

Demand: Sluggish.

Market: The dust market also witnessed a lower trend with prices dropping by Rs. 10/- and Rs. 15/- and suffered heavy withdrawals.

The overall sale percentage is 46% at an average of Rs. 138.63.

Buying Pattern: Fair Internal operation was witnessed with Major Blender lending some support. Export has improved their quantity of buying considerably.

ORTH DUST

Demand: Good

Market: The lower trend continues on the Orthodox dust market as well with prices dropping by Rs. 8/- to Rs. 10/- and sometimes more.

The overall sale percentage is 81% at an average of Rs. 126.30.

Buying Pattern: Fairly good Export operation with equally good Internal operation.

COIMBATORE

CTC LEAF

Demand: Less demand.

Market: Better medium teas were lower by Rs.5/- to Rs.7/- with heavy withdrawals. Others lower by Rs.10/- to Rs.15/- with heavy withdrawals.

ORTH LEAF: Fair demand. Around lower by Rs.5/- sometimes more.

CTC DUST

Demand: Fair demand.

Market: Better liquoring and popular sorts were lower by Rs.3/- to Rs.4/- with heavy withdrawals particularly on bolder grades. Others lower by Rs.5/- to Rs.10/- with some withdrawals.

ORTH DUST Less demand. Lower by Rs.3/- to Rs.5/- with heavy withdrawals. .

Source: Paramount Tea Marketing (SI) Private Limited.

02nd December, 2020

-/tp